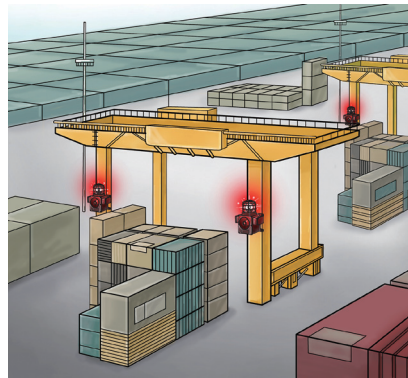


SCD series

Warning Light and Electric Horn Combinations for Vessels and Heavy Industry Applications

Light weight warning light and electric horn combinations with polycarbonate housing for vessels and heavy industry applications

- **SCDF series**
- Self stand type
- **SCDW series**
- Wall mount type



Common Specifications(SCDF/SCDW)

- Warning light and electric horn combinations for vessels and heavy industrial applications
- Light weight model with special polycarbonate (PC+GF) housing
- Excellent hermetic structure that blocks water and dust
- Superior impact and shock resistance
- Prevents damage from external contact with recessed horn structure, high volume output possible with the extended length of the horn housing
- Easy wiring and sound control with the terminal box attached on the side of housing
- Standard model comes with a protection cage equipped
- Can select a variety of light sources and sound pattern combinations
- Detachable mounting bracket structure enables product to be either self stand type or wall mount type
- Can adjust sound volume and select sound pattern with the switches built inside the units
- Materials : Lens-PC, Housing-PC+GF, Protection cage-SUS316L, Reflector-PC, Multi-tiered reflector-Heat resistance ABS
- Cable entry : 1/2"PF
- Ambient operating temperature
-20°C to +50°C : SCDFLR, SCDWLR, SCDF, SCDW
-30°C to +50°C : SCDFL, SCDWL, SCDFS, SCDWS
- Protection rating : IP66
- Certificates : KIMM, KR, CE Compliant
- Mountings : Available in self stand type and wall mount type

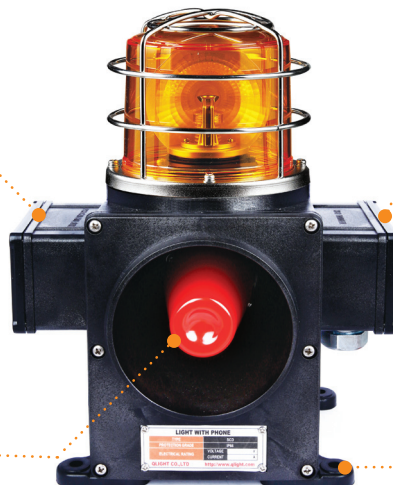
SCD series Product Category Chart

| | LED revolving type | LED steady/ flashing type | xenon lamp strobe type | Bulb revolving type |
|-----------------|--------------------|---------------------------|------------------------|---------------------|
| Self stand type | SCDFLR | SCDFL | SCDFS | SCDF |
| Wall mount type | SCDWLR | SCDWL | SCDWS | SCDW |

Easy control of the audible sound since the sound control board is located separately from the main board



Recessed horn structure protects it from damage by external forces

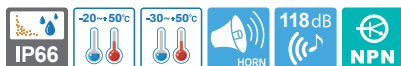


Easy wire configuration possible with terminal box located on the side of the housing

Detachable mounting bracket structure enables product to be either self stand type or wall mount type

SCD series

Warning Light and Electric Horn Combinations for Vessels and Heavy Industry Applications



- **SCDF series**
- Self stand type
- **SCDW series**
- Wall mount type



SCDWLR



SCDFLR



SCDWL / SCDWS



SCDFL / SCDFS

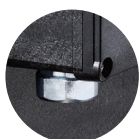


SCDW

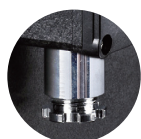


SCDF

SCDF/SCDW series are equipped with flexible connector at cable entry. Cable gland is an optional item.



Flexible connector



Cable gland

SCDFLR/ SCDWLR LED Revolving Warning Light and Electric Horn Combination

- Excellent omni-directional visibility with LED light collecting system and special multifaceted reflector
- Revolving speed : 120 - 140RPM
- Ambient operating temperature : -20°C to +50°C

| Model number | Voltage | Current | Sound pattern and volume | Certificates | Weight | Color |
|------------------|---------|---------|--|--------------|--|---|
| SCDFLR SCDWLR | DC12V | 2.633A | <ul style="list-style-type: none"> • WS-5 Warning sounds : 118dB • WP-5 Special warning sounds : 118dB • WM-5 Melodies : 118dB • WA-5 Alarms : 116dB • WV-5 Customizable voices : 113dB | | <ul style="list-style-type: none"> • SCDFLR DC-2.60kg • SCDWLR DC-2.70kg | <ul style="list-style-type: none"> • R-Red • A-Amber • G-Green • B-Blue |
| | DC24V | 1.288A | | | | |
| | AC110V | 0.308A | | | | |
| | AC220V | 0.154A | | | | |

SCDFL/ SCDWL LED Steady/Flashing Warning Light and Electric Horn Combination

- Multi layer LED reflect system emits clear and uniform level of signal lights throughout the lens
- Flashing rate : 60-80 flashes/min (Built-in steady/flashing selection switch)
- Ambient operating temperature : -30°C to +50°C

| Model number | Voltage | Current | Sound pattern and volume | Certificates | Weight | Color |
|----------------|---------|---------|--|--------------|--|---|
| SCDFL SCDWL | DC12V | 2.511A | <ul style="list-style-type: none"> • WS-5 Warning sounds : 118dB • WP-5 Special warning sounds : 118dB • WM-5 Melodies : 118dB • WA-5 Alarms : 116dB • WV-5 Customizable voices : 113dB | | <ul style="list-style-type: none"> • SCDFL DC-2.42kg • SCDWL DC-2.52kg | <ul style="list-style-type: none"> • R-Red • A-Amber • G-Green • B-Blue |
| | DC24V | 1.222A | | | | |
| | AC110V | 0.286A | | | | |
| | AC220V | 0.143A | | | | |

SCDFS/ SCDWS Xenon Lamp Strobe Warning Light and Electric Horn Combination

- Convenient lamp exchange by adopting connector type lamp installation
- Flashing rate : 60-80 flashes/min
- Ambient operating temperature : -30°C to +50°C

| Model number | Voltage | Current | Bulb | | | Sound pattern and volume | Certificates | Weight | Color |
|----------------|---------|---------|---------------|-----------------------------|----------|--|--------------|--|---|
| | | | Spec | Standard | Parts no | | | | |
| SCDFS SCDWS | DC12V | 2.933A | 200V -550V | EUB0641 -1A(G) U Type | 48 | <ul style="list-style-type: none"> • WS-5 Warning sounds : 118dB • WP -5 Special warning sounds : 118dB • WM-5 Melodies : 118dB • WA-5 Alarms : 116dB • WV -5 Customizable voices : 113dB | | <ul style="list-style-type: none"> • SCDF DC-2.46kg • SCDW DC-2.46kg | <ul style="list-style-type: none"> • R-Red • A-Amber • G-Green • B-Blue |
| | DC24V | 1.411A | | | | | | | |
| | AC110V | 0.360A | | | | | | | |
| | AC220V | 0.220A | | | | | | | |

SCDF/ SCDW Bulb Revolving Warning Light and Electric Horn Combination

- Multi layer reflector system provides excellent signal light diffusing effect
- Revolving speed : 120 - 140RPM
- Ambient operating temperature : -20°C to +50°C

| Model number | Voltage | Current | Bulb | | | Sound pattern and volume | Certificates | Weight | Color |
|--------------|---------|---------|--------|----------|----------|--|------------------|--|---|
| | | | Spec | Standard | Parts no | | | | |
| SCDF SCDW | DC12V | 3.755A | 12V15W | G23 15S | 17 | <ul style="list-style-type: none"> • WS-5 Warning sounds : 118dB • WP -5 Special warning sounds : 118dB • WM-5 Melodies : 118dB • WA-5 Alarms : 116dB • WV -5 Customizable voices : 113dB | | <ul style="list-style-type: none"> • SCDF DC-2.58kg • SCDW DC-2.68kg | <ul style="list-style-type: none"> • R-Red • A-Amber • G-Green • B-Blue |
| | DC24V | 1.788A | 24V15W | G23 15S | 18 | | | | |
| | AC110V | 0.422A | 12V15W | G23 15S | 17 | | | | |
| | AC220V | 0.211A | 12V15W | G23 15S | 17 | | | | |



Warning/Signal/Stackable



Signal & Electric Horn/ Speakers



Vessels and Heavy-Duty Equipment



Explosion Proof



Warning Light Bar



Aviation Obstruction Lights



Signal Tower Lights



USB/ETN Signal Tower Lights



Wireless Network System



Electric Horn/ Speakers



Industrial LED Lights

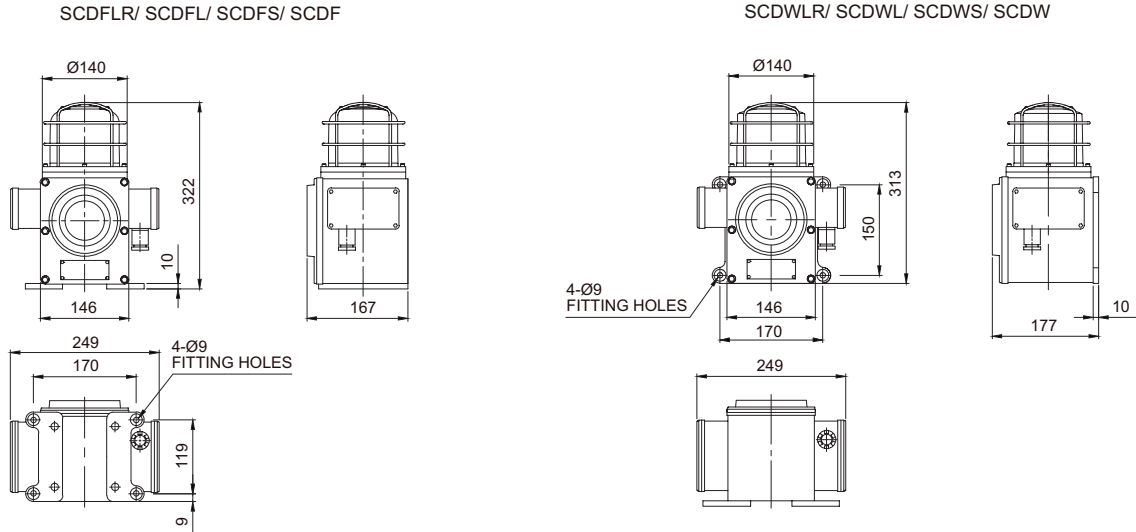
SCD series

Warning Light and Electric Horn Combinations for Vessels and Heavy Industry Applications



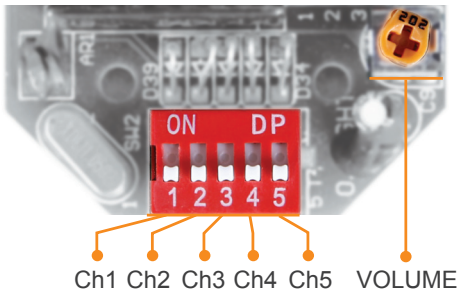
Technical Diagram

(Units : mm)

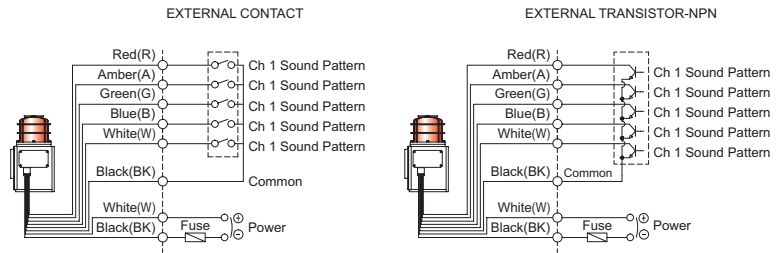


Sound Selection Instructions and Wiring

- Standard Type : Select sound using the switch inside of the unit. When you turn on the dip switch for each channel, the designated sound will be played.
- Customization : External contact(LC)



SCDW SERIES-DC/AC
SCDF SERIES-DC/AC



Customization

- Customized cable entry(3/4"PF) available(Standard : 1/2"PF)
- Customized external sound line type available : SCD series has built-in switch for sound tone selection
- Customized wiring available to select the sound tone via external contact or transistor wiring type(Model number : -LC)
- Cable gland type



Ordering Specification

| SCDW | - | WA | - | 24 | - | R |
|--|---|--|---|--|---|---|
| [Model number] | | [Sound] | | [Voltage] | | [Color] |
| <ul style="list-style-type: none"> • SCDFLR • SCDFL • SCDFS • SCDF • SCDWLR • SCDWL • SCDWS • SCDW | | <ul style="list-style-type: none"> • WS-Warning sounds • WP-Special warning sounds • WM-Melodies • WA-Alarms • WV-Customizable voices | | <ul style="list-style-type: none"> • 12-DC12V • 24-DC24V • 110-AC110V • 220-AC220V | | <ul style="list-style-type: none"> • R-Red • A-Amber • G-Green • B-Blue |